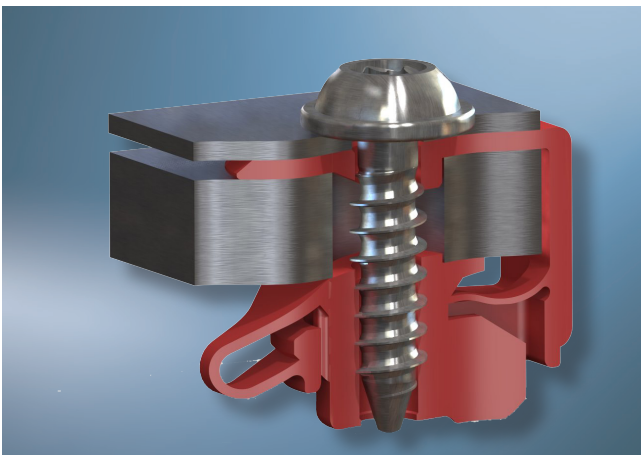
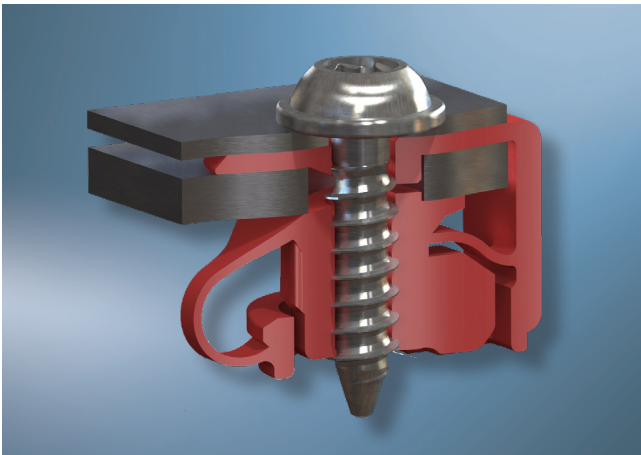


## EJOT EASYboss® V

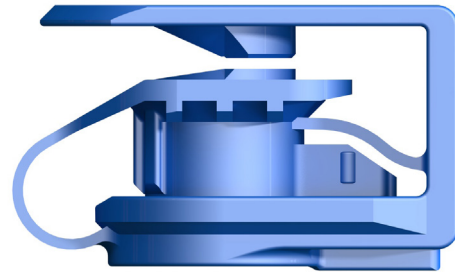
The EJOT EASYboss® V is a fastening element for assembly on varying component thicknesses. The resilient screw boss equalises the clamping thickness and at the same time applies the clamp load for the captive pre-assembly.



*EASYboss® V functionality for various clamp thicknesses*

With the EJOT EASYboss® V cost saving potentials can be realised through standardisation.

The EJOT EASYboss® V40 is designed for an EJOT DELTA PT® 40 screw and is used as a subsequently assembled screw boss on components that lack the possibility of direct assembly.



### Advantages of the EASYboss® V:

- A fastening element for varying component thicknesses
- No mix-up possibilities since only one fastening element is necessary
- Economic efficiency through part reduction
- High dynamic safety
- No Corrosion
- Ergonomic and safe assembly
- No catching of the parts
- Consistent tightening torques
- Prerequisites for automation
- Recyclable

### Technical data

- Snap-on thickness range  $C_2 = 0,8 - 3,0 \text{ mm}$   
 $C_2 = 2,5 - 5,5 \text{ mm}$
- Material: PA66 heat stabilised
- Tightening torque: 1,6 Nm
- Screw: EJOT DELTA PT® 40

### Installation note:

- edge distance  $B_2 = 9 \text{ mm}$
- Hole diameter  $D_6 = 7 \text{ mm}$
- Wall distance  $E_1 = 10 \text{ mm}$

